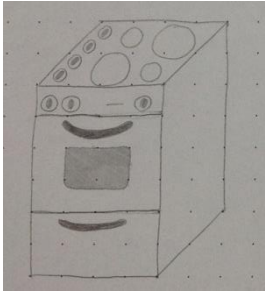
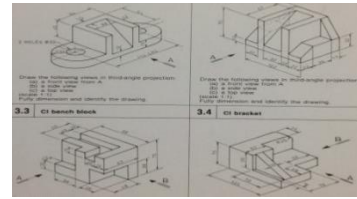




## Semester 1 TG571 - Foundation



The major focus for this unit will be sketching to proportion a variety of real life objects. Students will also be exposed to and present a range of graphical communication drawings using technical drawing equipment. During the semester students will complete a design folio on one major object of their choice.

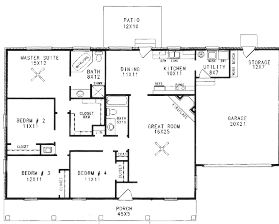


## Assessment

There will be a practical drawing test on sketching and board drawing at the end of the semester which will be used to assess skills as well as all class drawings. A completed design folio will also be assessed.

## Semester 1 TG671 - Graphics

The major focus for this semester will be Architectural Drawing completed using CAD (Computer Aided Drawing). There will be several smaller class drawings completed over the semester with a major focus on one. Students will also be required to design and print an object of their choice with teacher approval using the 3D Printer. Students will be expected to use their knowledge gained from previous units to complete a drawing folio on the prescribed area.

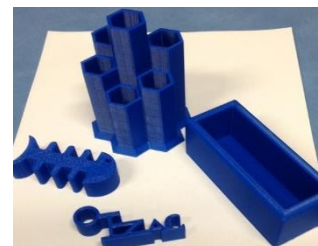
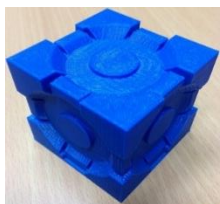


## Assessment

The completed class drawing folio will be assessed as well as a design folio related to the major focus covered during the semester.

## Semester 2 TG672 - Graphics

The major focus for this semester will be Engineering completed using CAD (Computer Aided Drawing). There will be several smaller class drawings completed over the semester with a major focus on one. Students will also be required to design and print an object of their choice with teacher approval using the 3D Printer. Students will be expected to use their knowledge gained from previous units to complete a drawing folio on the prescribed area.



## Assessment

The completed class drawing folio will be assessed as well as a design folio related to the major focus covered during the semester.